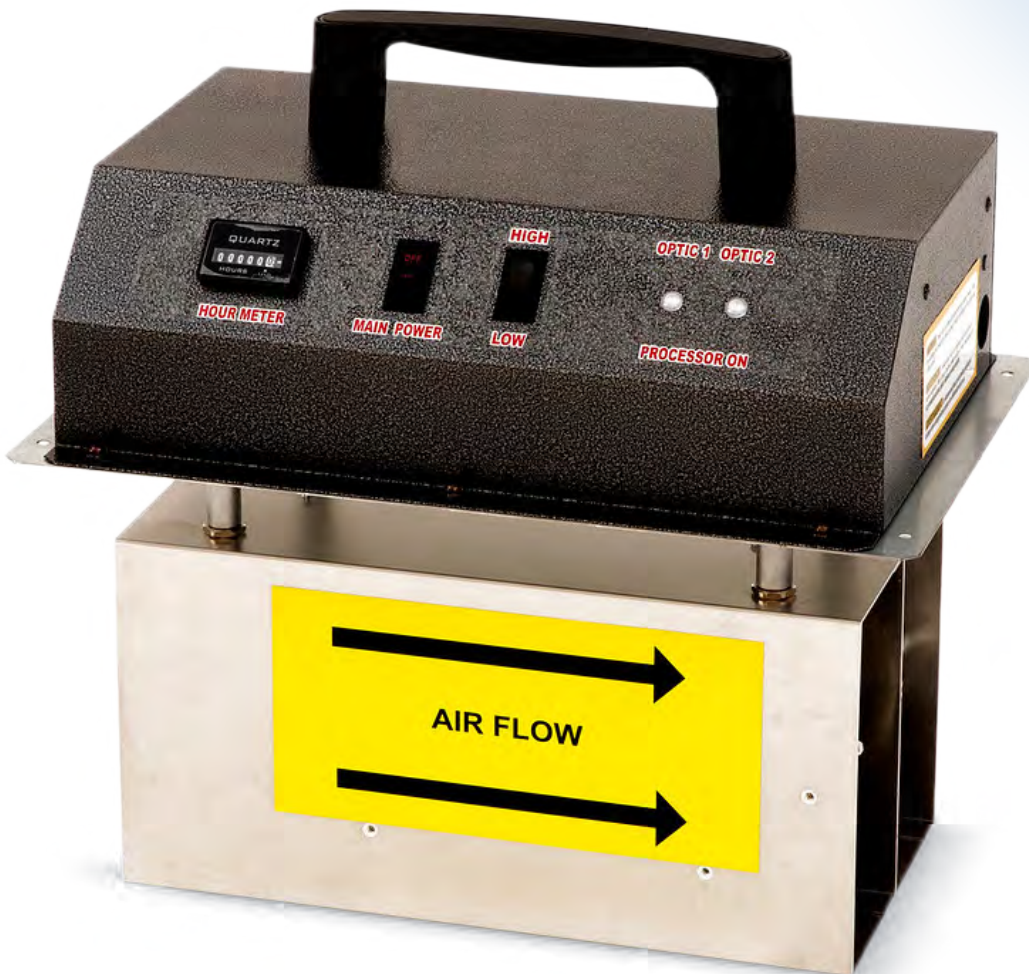
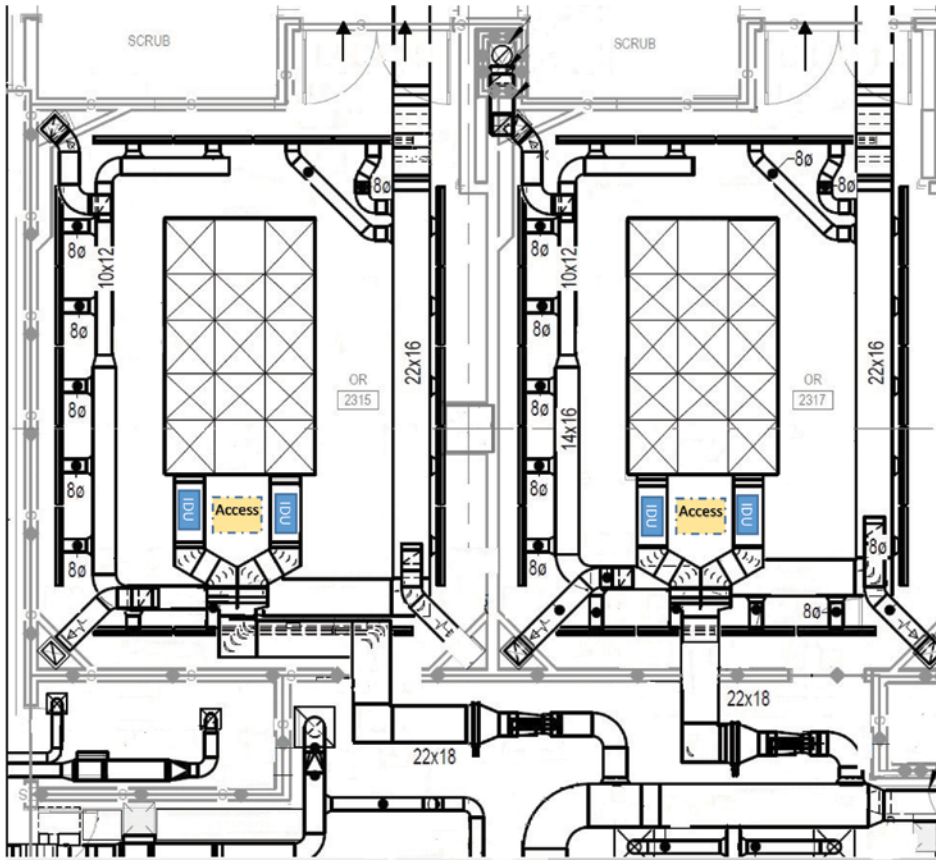


# Pyure IDU™ - Induct Unit

## Product Specifications



# Example Induct "OR" Installation



Typical IDU™ Series  
Unit Placement  
(Within the OR Area)

## Within the OR Area

Each IDU™ Unit requires 120VAC @ 1.0Amp /or/ 220VAC @ 0.5 Amp Supply

24"x24" Access Panel required for servicing the IDU™ units (Annual Optic Replacement/Cleaning)

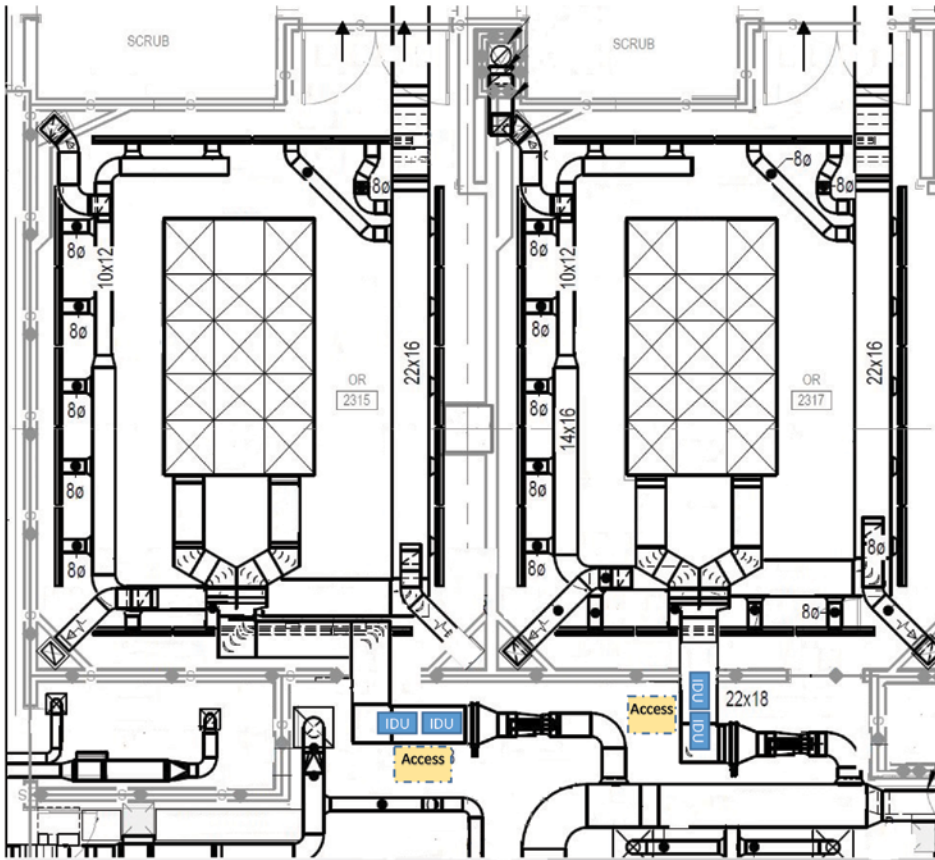
Access Panel must be located within 18" of each IDU™ Unit.

A local method of power disconnect is required to each IDU™ Unit.

### GENERAL INSTALLATION NOTES:

1. The above diagrams show typical locations for the installation of the Pyure Induct (IDU™) Units.
2. The customer or customer's engineering is responsible for determining the location for the IDU™ units as well as the location for the Access Panels to service the units. The customer is responsible to cut the openings in the duct and the Access Panels as well as providing electrical hookups to each of the IDU™ units.

# Locations



Typical IDU™ Series  
Unit Placement  
(Outside OR Area)

## Outside OR Area

Each IDU™ Unit requires 120VAC @ 1.0Amp /or/ 220VAC @ 0.5 Amp Supply

24" x 24" Access Panel required for servicing the IDU™ units (Annual Optic Replacement/Cleaning)

Access Panel must be located within 18" of each IDU™ Unit.

A local method of power disconnect is required to each IDU™ Unit.

PRO: Does not disturb the sterile portion of the OR Area.

3. STERIS will mount the IDU™ units, power them from the customer supplied electrical feeds and test the units.
4. Please refer to the "Pyure IDU™ - Induct Unit Product Specifications" (P/N IDU02LS100) and the "Pyure IDU™ - Induct Unit Owner's Manual" (P/N IDU02LP100) for Installation and Unit Specification details.

# Pyure IDU™ Induct Unit

The IDU™ series can be used in medical, senior living, office, retail and other commercial, scholastic or hospitality use. It is equipped with two hydroxyl generating optics, and designed for continuous operation.

The IDU™ series comes in three models, depending on the volume of the treatment space. The table below summarizes the treatment area range for each model. These guidelines should be adhered to for optimal performance and safety.

Model #	Part #	Optimal Area
IDU™ - IDS02 model	0819355020324	Standard OR Sterile Field
IDU™ - IDB02 model	0819355020331	Hybrid OR Sterile Field

## Specifications

<b>Dimensions (LxWxD)</b>	14.5" x 9.63" x 14.35" [368mm x 245mm x 365mm]
<b>Weight</b>	13.47lbs [6.11kg]
<b>Voltage</b>	100 - 240V 50/60Hz
<b>Power</b>	100 Watts (Nominal)   195 Watts (Max)
<b>Meter</b>	Hour Meter
<b>Number of Optics</b>	2
<b>Shipping Dimensions</b>	16" x 16" x 16" [407mm x 407mm x 407mm]
<b>Shipping Weight</b>	17.5lbs [7.94kg]
<b>Certification</b>	ETL US/Canada, CE, RoHS, REACH
<b>Warranty</b>	2 years covering defects in workmanship or materials, but excluding spare parts and consumables

EPA Establishment Number 99502-FL-1 per 40 C.F.R Part 167



Distributed by:



440-354-2600 • 800-548-4873  
www.steris.com

Copyright 2022, The Pyure Company.  
Odorox® and IDU™ is a trademark of The Pyure Company,  
Boynton Beach, FL 33426 USA.